

AUGUST  
2020



2020 - 2021  
Georgia's Pre-K  
Program

Parent Orientation





# Welcome to Day-Star

## Agenda

- ☐ Enrollment Requirements
- ☐ Instructional Day
- ☐ Attendance Policy & Attire
- ☐ School Calendar
- ☐ Mandatory Family Conferences
- ☐ COVID-19 & Other Health and Safety Policies
- ☐ Parent Engagement & Volunteerism: Procare Connect, Newsletter
- ☐ Drop Off & Pick Up
- ☐ Before/After Care, Care During GA Pre-K closures
- ☐ Instructional Supports and Special Needs Services

\*Meeting is being recorded.





# Welcome to Day-Star

## Agenda

- ❑ Enrollment Requirements



# Enrollment Documents

Must be received before or by

Monday, August 24, 2020

To reserve scholar's spot:

\*\*Proof of address

\*\*Birth certificate

\*Copies only

**DAY-STAR CHRISTIAN ACADEMY**

**GA Pre-K Student File Checklist**

In order to enroll your child in our GA Pre-K program, please make sure we have all of the following required and applicable documents:

- **Proof of Address (rental lease or utility bill)**  
*Note: If living with someone, a notarized letter written by the leaseholder stating that the parent and child being enrolled resides at address and a copy of the lease are needed.* ☒
- **Current Immunization Records (records cannot be expired) -or- [Refusal to Vaccinate](#)** ☐
- **Birth Certificate or Certificate of Live Birth** ☐
- **Copy of Parent's and Child's Social Security Card** ☐
- **Form 3300 – Vision, Hearing, Dental, Nutrition** ☐
- **Completed Application Packet** ☐
- **Roster Information Form (included in application packet)** ☐
- **Income Eligibility Statement (included in application packet)** ☐
- **IF APPLICABLE: Copy of food stamp (EBT) card** ☐
- **IF APPLICABLE: Copy of child's Medicaid card** ☐



# Welcome to Day-Star

## Agenda

- ☐ Enrollment Requirements
- ☐ Instructional Day



# Instructional Day

8:00 am – 2:30 pm (6.5 hours)

Drop off begins at 7:30 am  
(before this time is before care)

Drop off ends at 8:15 am  
(scholar is late after 8:00 am)

Pick up is at 2:30 pm (after this  
is late pick up)

Must be present for entire 6.5 hours

Time	Activity	Large Group (5-8)	Small Group (3-5)	Outdoor Recess
8:00 AM		40 min  Literacy, Phonological Awareness, Alphabetic Principle, Story Time & Meaningful Discussion, Music & Movement		
8:40 AM			20 min  Cognitive and Development Sub-Domains: Math, Science, Social Studies, Creative/Cognitive Development	
9:00 AM / 1:45 PM				30 min = 1 hr
1:30 AM		15 min  Story Time & Meaningful Discussion		
2:20 PM		10 min  Daily Recap & Share		



# Welcome to Day-Star

## Agenda

- ☐ Enrollment Requirements
- ☐ Instructional Day
- ☐ Attendance Policy & Attire





# Attendance & Attire

Uniform colors: light/navy blue, light yellow, and white

Boys: khaki/navy blue pants/shorts, white/yellow/blue shirt

Girls: khaki/navy blue pants/shorts/skirts, white/yellow/blue shirt



*\*Wear every day except Friday*



# Attendance & Attire

Chronic  
Absenteeism/Tardiness

10 consecutive days  
unexcused

After 8:00 am late – more  
than twice per month  
tardy



*\*Wear every day except Friday*



# Welcome to Day-Star

## Agenda

- ☐ Enrollment Requirements
- ☐ Instructional Day
- ☐ Attendance Policy & Attire
- ☐ School Calendar





# School Calendar

## Updates:

Last Day of  
Instruction: May  
28, 2021

## Teacher Planning: June 1-2

Be sure to pay attention to the color key on the calendar.

Georgia Dept of Early Care and Learning  
BRIGHT FUTURE FOR THE STATE

Today is: 8/14/2020

Contact Us Help

Welcome, Carolyn

System Admin

Pre-K

Enter Application

Aff. Lawful Presence Pre-K

Edit Company Profile

Rosters

Waiting List

Payments

Recon Form

CLASS Observation

View/Edit Calendar

RK-STP

RPK-STP

QRSG

## Provider Calendar

Home > Pre-K > View/Edit Calendar > Provider Calendar

Calendar list Print Calendar

### Calendar Details

Enter the details and click save

Year: 2021

Calendar Name:

Number of Days: 190

Legal Name: Day-Star Christian Academy, Inc.

Calendar Status: Draft

General

Calendar

Sites

Select a legend on the right and then mark the dates on the calendar.

July 2020

Su	Mo	Tu	We	Th	Fr	Sa
		1	2	3	4	
5	6	7	8	9	10	11
12	13	14	15	16	17	18
19	20	21	22	23	24	25
26	27	28	29	30	31	

August 2020

Su	Mo	Tu	We	Th	Fr	Sa
						1
2	3	4	5	6	7	8
9	10	11	12	13	14	15
16	17	18	19	20	21	22
23	24	25	26	27	28	29
30	31					

September 2020

Su	Mo	Tu	We	Th	Fr	Sa
		1	2	3	4	5
6	7	8	9	10	11	12
13	14	15	16	17	18	19
20	21	22	23	24	25	26
27	28	29	30			

October 2020

Su	Mo	Tu	We	Th	Fr	Sa
					1	2
3	4	5	6	7	8	9
10	11	12	13	14	15	16
17	18	19	20	21	22	23
24	25	26	27	28	29	30
31						

November 2020

Su	Mo	Tu	We	Th	Fr	Sa
1	2	3	4	5	6	7
8	9	10	11	12	13	14
15	16	17	18	19	20	21
22	23	24	25	26	27	28
29	30					

December 2020

Su	Mo	Tu	We	Th	Fr	Sa
		1	2	3	4	5
6	7	8	9	10	11	12
13	14	15	16	17	18	19
20	21	22	23	24	25	26
27	28	29	30	31		

January 2021

Su	Mo	Tu	We	Th	Fr	Sa
						1
2	3	4	5	6	7	8
9	10	11	12	13	14	15
16	17	18	19	20	21	22
23	24	25	26	27	28	29
30	31					

February 2021

Su	Mo	Tu	We	Th	Fr	Sa
1	2	3	4	5	6	
7	8	9	10	11	12	13
14	15	16	17	18	19	20
21	22	23	24	25	26	27
28						

March 2021

Su	Mo	Tu	We	Th	Fr	Sa
	1	2	3	4	5	6
7	8	9	10	11	12	13
14	15	16	17	18	19	20
21	22	23	24	25	26	27
28	29	30	31			

April 2021

Su	Mo	Tu	We	Th	Fr	Sa
						1
2	3	4	5	6	7	8
9	10	11	12	13	14	15
16	17	18	19	20	21	22
23	24	25	26	27	28	29
30	31					

May 2021

Su	Mo	Tu	We	Th	Fr	Sa
						1
2	3	4	5	6	7	8
9	10	11	12	13	14	15
16	17	18	19	20	21	22
23	24	25				

# Welcome to Day-Star

## Agenda

- ☐ Enrollment Requirements
- ☐ Instructional Day
- ☐ Attendance Policy & Attire
- ☐ School Calendar
- ☐ Mandatory Family Conferences





# Mandatory Family Conferences

Kindergarten Readiness (GELDS)

Weekly Assessments

Work Sampling Online

<https://wsoz.pearsonclinical.com/wsoTeacherApp/teachApp/login/showLogin.html?product=work>

Twice in school year (Nov./Mar.)



# Welcome to Day-Star

## Agenda

- ☐ Enrollment Requirements
- ☐ Instructional Day
- ☐ Attendance Policy & Attire
- ☐ School Calendar
- ☐ Mandatory Family Conferences
- ☐ COVID-19 & Other Health and Safety Policies





# COVID-19 & Health Policies

Hand Washing/Personal Hygiene

Face Masks/Shields

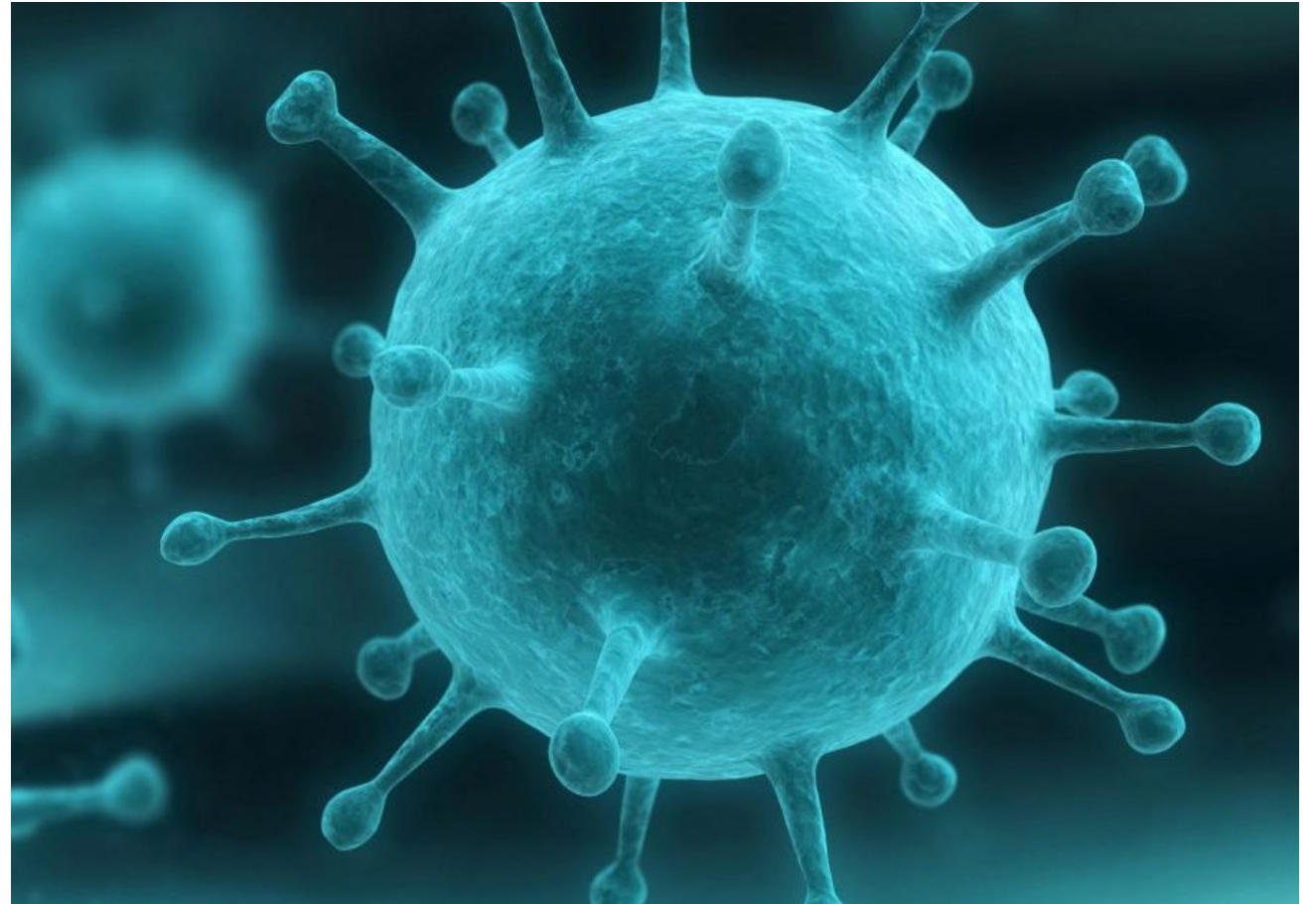
Social Distancing

Outside Food/Beverages

Illness/Getting Sick in School  
(Symptoms)

What Scholars Can Bring/What They  
Can't Bring

Closure(s) Due to COVID-19



**Consistency is key.**



# Welcome to Day-Star

## Agenda

- ☐ Enrollment Requirements
- ☐ Instructional Day
- ☐ Attendance Policy & Attire
- ☐ School Calendar
- ☐ Mandatory Family Conferences
- ☐ COVID-19 & Other Health and Safety Policies
- ☐ Parent Engagement & Volunteerism: Procare Connect, newsletter





# Parent Engagement & Volunteerism

## Virtual Engagement:

- Zoom Story Time
- Zoom Center Time
- Procare Connect
- MyProcare
- Newsletter

## Volunteerism:

- Donating Supplies
- Dropping Off Snacks/Treats
- Contribute to School Newsletter
- Organize Virtual Field Trip

## Parental Engagement



Sign up will be available starting  
week 2

## Volunteerism



# Welcome to Day-Star

## Agenda

- ☐ Enrollment Requirements
- ☐ Instructional Day
- ☐ Attendance Policy & Attire
- ☐ School Calendar
- ☐ Mandatory Family Conferences
- ☐ COVID-19 & Other Health and Safety Policies
- ☐ Parent Engagement & Volunteerism: Procare Connect, Newsletter
- ☐ Drop Off & Pick Up







## Drop Off & Pick Up

**Please pick up on time!!!**

### **Drop Off:**

Begins at 7:30 am

Must be in no later than 8:15 am

### **Pick Up:**

Begins at 2:30 pm

\$1.00 per minute late fee

**GA Pre-K is NOT daycare service. It is school!!!**



# Welcome to Day-Star

## Agenda

- ☐ Enrollment Requirements
- ☐ Instructional Day
- ☐ Attendance Policy & Attire
- ☐ School Calendar
- ☐ Mandatory Family Conferences
- ☐ COVID-19 & Other Health and Safety Policies
- ☐ Parent Engagement & Volunteerism: Procare Connect, Newsletter
- ☐ Drop Off & Pick Up
- ☐ Before/After Care, Care During GA Pre-K closures





# Before/After Care & Pre-K Off Days

## 2020 – 2021 Rates

- Before Care (any time before 7:30 am): \$25.00 per day -or- \$75.00 per week
- After Care (any time after 2:30 pm): \$25 per day -or- \$75.00 per week
- Before & After Care: \$50.00 per day -or- \$100.00 per week
- Full day: \$35/daily -or- \$124/weekly

**\*Reflects current rates for 2020-2021 fiscal year.**





# Welcome to Day-Star

## Agenda

- ☐ Enrollment Requirements
- ☐ Instructional Day
- ☐ Attendance Policy & Attire
- ☐ School Calendar
- ☐ Mandatory Family Conferences
- ☐ COVID-19 & Other Health and Safety Policies
- ☐ Parent Engagement & Volunteerism: Procare Connect, Newsletter
- ☐ Drop Off & Pick Up
- ☐ Before/After Care, Care During GA Pre-K closures
- ☐ Instructional Supports and Special Needs Services

\*Meeting is being recorded.







Thank You!

daystarchristianacademy  
@yahoo.com